

Gas/Liquid Separators

In-Line
T-Type

Coalescers
Two Stage
Internal

Exhaust Heads
Drain Traps

**Solving Your Need
for Cleaner and
Drier Air, Gas
& Steam
With Smarter
Technology**

EATON

Powering Business Worldwide

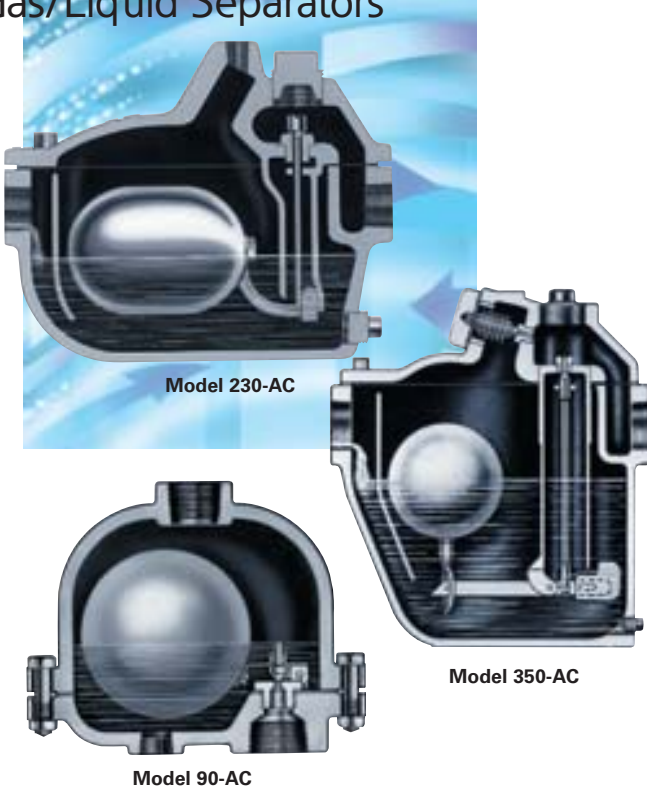
Monarch Group - Filters, Strainers & Separators

Australia - www.monarchindustrial.com.au

Thailand - www.psfthailand.com

Float Drain Traps

Drain Condensate from Gas/Liquid Separators



Eaton Drain Traps efficiently handle, without loss of line pressure, the draining of condensate removed from air or gas lines by separators of the condensate that accumulates in storage tanks or at drip points. These traps are capable of removing up to 2800 pounds of condensate per hour and work with pressure differentials from 5 psi up to 250 psi.

Model 90-AC and 95-AC Float Drain Trap

Available in cast iron, cast carbon steel or cast stainless steel for 0 psi to 500 psi service. Loss of air or gas is prevented by a positive water seal. They have a straight-through design. Internal parts, including valve and seat, are corrosion-resistant, non-magnetic stainless steel. All working parts are attached to the base for easy removal and inspection. A side inlet/outlet configuration is available for iron, carbon steel and stainless steel traps.

FEATURES

- No Priming Required
- Stainless Steel Internal Parts
- Internal Parts Removed with Cover
- No Loss of Line Pressure
- Choice of Inlet/Outlet Configurations

OPTIONS

- Heater for Low Temperature Applications

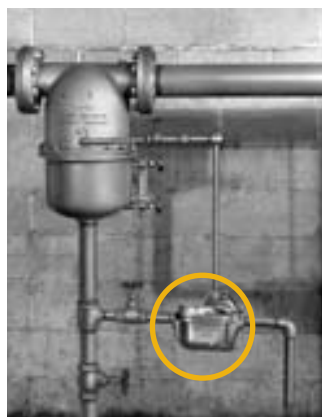
Model 230-AC

Available in cast iron for 0 psi to 125 psi service. Ideal for use where gummy emulsions or cylinder lubricants make other traps inoperative. They feature a vertical inlet, down-flow discharge design. Ample float power and large outward-opening discharge valve prevent loss of pressure. Internal parts are stainless steel, including non-magnetic valve and seat. Working parts are attached to the cover for easy removal without disconnecting the trap from the line. No priming is required. For low temperature applications a heater is available as an option.

Model 350-AC

“THREE-TRAPS-IN-ONE” is the basic principle of these ball float traps. Three valves open and close progressively as condensate volume varies. As float chamber water level rises, the float lies deep in the water until its buoyancy overcomes the opposing line pressure and snaps the valve wide open. When closing, as each valve approaches its seat, the line pressure snaps it tightly closed. These traps have cast iron bodies, and stainless or copper internal parts. A by-pass thermostat is standard.

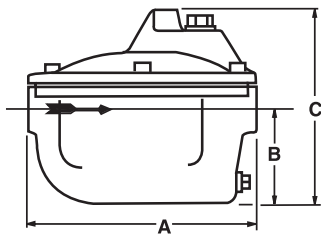
Typical Float Drain Trap Installations



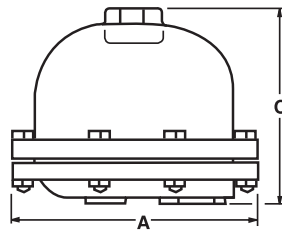
Model 230-AC installation



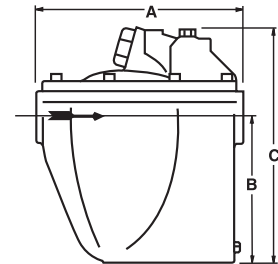
Model 90-AC installation



Model 230-ACN



Model 90-AC



Model 350-ACN

Dimensions - Types 90, 95 & 230 (in /mm)

Model No.	Pipe Size (NPT)	Dimensions				Weight (lb/kg)		
		A	B	C	Width	Cast Iron	Cast Steel	Stainless Steel
90-AC	3/4	6.12 / 155	-	4.87 / 124	5.12 / 130	19 / 8.6	-	-
90-AC-SI-SO	1/2	6.12 / 155	-	5.75 / 146	5.12 / 130	19 / 8.6	-	-
95-AC	1	7 / 178	-	6.12 / 155	6.12 / 155	19 / 8.6	19 / 8.6	19 / 8.6
230-ACN	1	9 / 229	3.63 / 92	7.5 / 190	5.63 / 143	19 / 8.6	-	-
350-ACN	1, 1-1/4, 1-1/2, 2*	14.38 / 365	8.5 / 216	15.38 / 391	9.25 / 235	73 / 33	-	-

* 1, 1 1/4 and 1 1/2 are bushed down from 2" size

Capacities (lb/hr) Condensate at 70 F - Models 90-AC, 230-AC & 350-AC

Model No.	Orifice Diameter	Differential Pressure (psi). Specify on Order												
		5	10	25	50	75	100	125	150	175	200	250	300	500
90-AC & 90-AC-SI-SO	5/32"	292	434	790	1273	1600	-	-	-	-	-	-	-	-
	1/8"	178	266	502	785	970	1130	1250	1370	1465	1550	1750	-	-
	3/32"	97	147	265	427	545	625	697	760	815	870	965	-	-
	5/64"	68	101	198	299	382	435	487	530	570	590	650	-	-
95-AC	5/32"	292	434	790	1273	1623	1850	2075	2250	2400	2575	2840	-	-
	1/8"	178	266	502	785	970	1130	1280	1370	1465	1550	1750	1950	2500
	3/32"	97	147	266	427	545	625	697	760	815	870	965	1060	1350
230-AC	7/32"	396	595	1075	1733	2205	2525	2800	-	-	-	-	-	-

Model No.	Orifice Diameter		Differential Pressure (psi). Specify on Order									
	Under 100 psi	Over 100 psi	5	10	25	50	75	100	125	150	175	200
350-AC	1/8"	3/32"	546	808	1464	2337	2985	3435	2085	2280	2445	2160
	9/64"	1/8"	702	1050	1804	2992	3787	4350	3825	4125	4410	4740
	5/32"	9/64"	877	1302	2370	3819	4867	5550	4860	5280	5400	6000
	3/16"	5/32"	1189	1785	3226	5201	6615	7575	6225	6750	7200	7400
	1/4"	7/32"	2145	3255	5771	9291	11827	13575	11625	12600	13650	14400

Typical Float Drain Trap Installations

